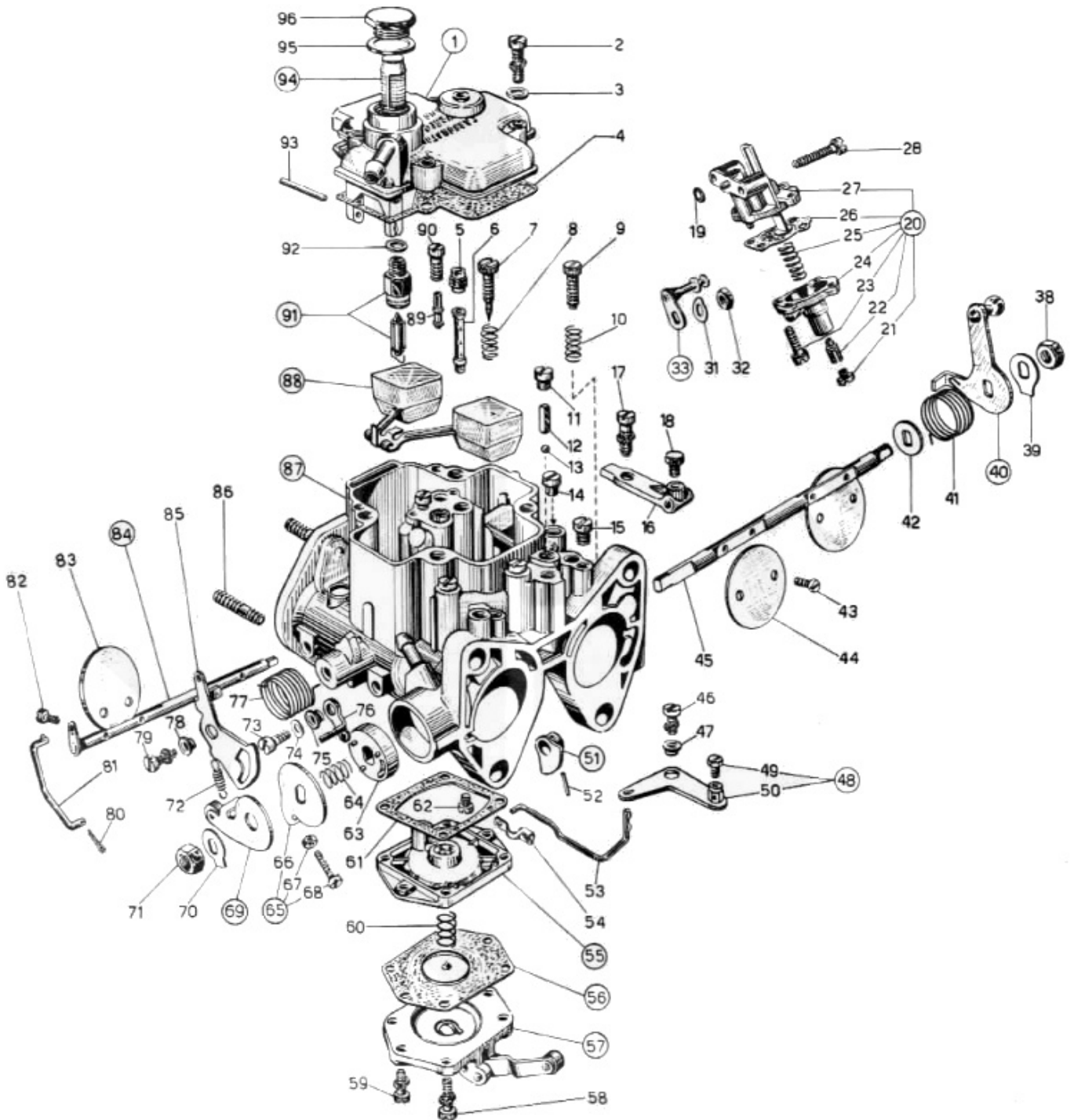




## WEBER 32 DCOF 2 - exploded view



<https://www.carbparts.eu>

Prices and product availability are subject to change



**CarbDeal**  
Selling carburetor parts since 2005



## WEBER 32 DCOF 2 - Parts list

No	Part No	Price	Pcs	Description	No	Part No	Price	Pcs	Description
S	41360.001	€ 2.1	2	Air bleed jet	51	14852.004	€ 0	1	Pump Cam
1	31736.005	€ 0	1	Carburetor top cover	52	58445.001	€ 0.4	1	Fixing Pin
2	64700.005	€ 0.5	4	Top Cover Fixing Screw	53	61280.039	€ 0	1	Tirammo comando avviamento
3	55510.034	€ 0.4	4	Spring Washer	54	47670.002	€ 4.9	1	Compression Spring
4	41705.030	€ 0	1	Carburetor Cover Gasket	55	39174.009	€ 0	1	Flangia pompa
5		€ 0	1		56	47407.039	€ 0	1	Pump diaphragm
6	61440.515	€ 0	2	Emulsion Tube	57	32486.025	€ 0	1	Accelerator Pump Cover
7	64750.001	€ 2.5	1	Idle Mixture Screw	58	64700.019	€ 0	4	Pump Cover Screw
8	47600.007	€ 2.2	1	Idle Mixture Screw Spring	59	64700.004	€ 2	2	Pump Cover Screw
9	64590.002	€ 9.1	1	Throttle Stop Screw	60	47600.107	€ 6.3	1	Pump Spring
10	47600.007	€ 2.2	1	Idle Mixture Screw Spring	61	41640.019	€ 5.4	1	Guarnizione per flangia pompa
11	61015.006	€ 3.3	2	Pump Demand Valve Cover	62	41120.001	€ 2.7	2	Main jet
12	52730.001	€ 3.3	2	Pump Valve Weight	63	50002.004	€ 0	1	Shaft Bushing
13	58300.001	€ 0.8	2	Pump Valve Ball	64	47600.027	€ 0	1	Bush retaining spring
14	61015.006	€ 3.3	2	Pump Demand Valve Cover	65	45082.007	€ 0	1	Leva registro minimo veloce comprendente
15	61015.004	€ 6.9	1	Inspection Screw	66	45080.012	€ 0	1	— Throttle Lever
16	58700.022	€ 0	1	Choke Cable Bracket	67	34705.002	€ 0	1	— Cold Start Nut
17	64700.003	€ 0	1	Lever Fixing Screw	68	64520.028	€ 0	1	Throttles adjusting screw
18	64605.017	€ 1.8	1	Choke Cable Clamp	69	45082.006	€ 0	1	Fast idling loose lever
19	41565.008	€ 0.8	1	O ring	70	55520.003	€ 0	1	Shaft Lock Tab
20	57804.021	€ 0	1	Dispositivo di sgolfamento comprendente	71	34710.003	€ 1	1	Throttle Spindle Nut
21	61015.003	€ 0	1	— Tappo	72	47605.006	€ 0	1	Spindle return spring
22	64595.005	€ 0	1	— Diaphragm adjusting screw	73	64520.029	€ 0	1	Fixing Screw
23	64700.004	€ 2	3	Pump Cover Screw	74	55530.008	€ 3.6	1	Spring Ring
24	32384.009	€ 0	1	— Coperchio scatola	75	12775.010	€ 8.7	1	Bushing For Lever
25	47600.070	€ 0	1	— Diaphragm loading spring	76	45032.104	€ 0	1	Choke Lever
26	47407.040	€ 29.2	1	— Membrana completa	77	47610.003	€ 4.9	1	Choke lever return spring
27	57804.022	€ 0	1	— Scatola con boccola	78	12775.010	€ 8.7	1	Bushing For Lever
28	64700.010	€ 0	2	Fixing Screw	79	64700.012	€ 2.8	1	Lever Fixing Screw
31	55530.008	€ 3.6	1	Spring Ring	80	32610.006	€ 0	1	— Spill pin
32	34715.006	€ 0	1	Nut	81	61280.040	€ 0	1	Tie rod
33	45027.084	€ 0	1	Lever	82	64525.003	€ 0	4	Choke plate fixing screw
38	34715.014	€ 1	1	Throttle Spindle Nut	83	64005.012	€ 0	2	Choke throttle valve
39	55520.002	€ 1	1	Shaft Lock Tab	84	10020.217	€ 0	1	Choke shaft
40	45034.029	€ 25.9	1	Throttles control lever	85	45200.033	€ 0	1	Lever
41	47610.071	€ 3.8	1	Throttle Return Spring	86	64955.104	€ 0	4	Stud
42	55555.019	€ 1.4	1	Shaft Spacer	87		€ 0	1	Carburetor body
43	64520.024	€ 0	4	Throttle Plate Screw	88	41030.006	€ 0	1	Float
44	64005.092	€ 0	2	Throttle Valve	89	41160.003	€ 2.5	2	Idle jet
45	10006.409	€ 0	1	Primary Throttle Shaft - Oversized	90	52570.003	€ 14.7	2	Idle Jet Holder
45	10005.411	€ 0	1	Throttle Shaft	91	64240.008	€ 0	1	Float valve
46	64700.012	€ 2.8	1	Lever Fixing Screw	92	41535.015	€ 0	1	Needle valve gasket
47	12775.010	€ 8.7	1	Bushing For Lever	93	52000.015	€ 1.8	1	Float pivot
48	45095.022	€ 0	1	Leva a squadra comprendente	94	37022.002	€ 3.7	1	Filter element
49	64615.004	€ 0	1	- Screw securing wire	95	41530.024	€ 0.3	1	Fuel Filter Gasket
50	45096.021	€ 0	1	— Leva a squadra	96	61002.010	€ 6.2	1	Fuel Filter Cover

<https://www.carbparts.eu>

Prices and product availability are subject to change

