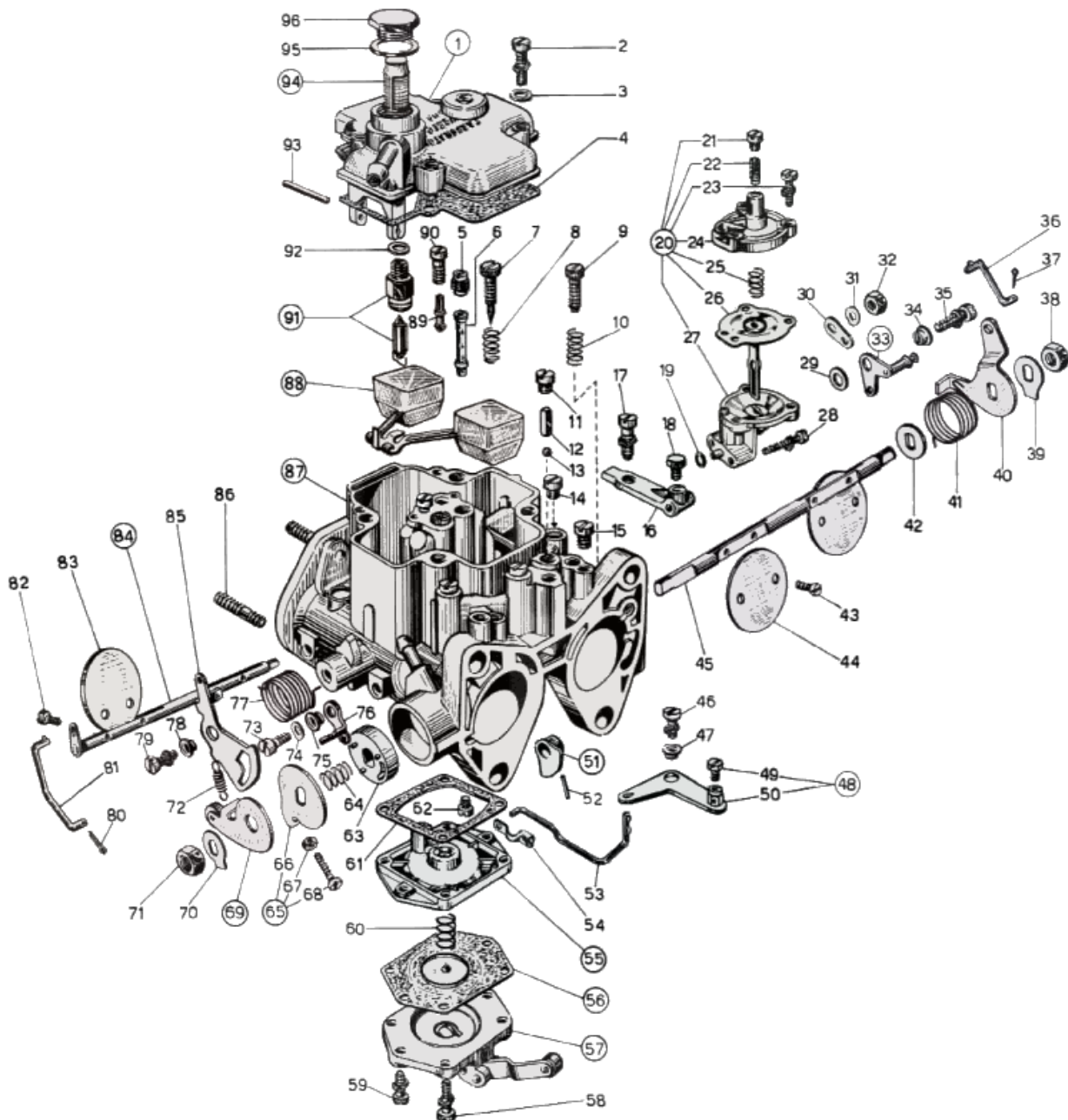




WEBER 32 DCOF 6

Exploded view



<https://www.carbparts.eu>

Preise und Produktverfügbarkeit können sich ändern



WEBER 32 DCOF 6

Liste der Teile



No	Teil Nr.	Preis	Stück	Beschreibung
1	31736.005	-	1	Carburetor top cover
2	64700.005	-	4	Top Cover Fixing Screw
3	55510.034	-	4	Spring Washer
4	41705.030	-	1	Carburettor Cover Gasket
5	41360.001	\$ 3.4	2	Air bleed jet
6	61440.515	-	2	Emulsion Tube
7	64750.001	\$ 3.8	1	Idle Mixture Screw
8	47600.007	\$ 2.6	1	Idle Mixture Screw Spring
9	64590.002	\$ 2.2	1	Throttle Stop Screw
10	47600 007	-	1	Idle Mixture Screw Spring
11	61015.006	\$ 4.9	2	Pump Demand Valve Cover
12	52730.001	\$ 4.9	2	Pump Valve Weight
13	58300.001	\$ 1.2	2	Pump Valve Ball
14	61015.006	\$ 4.9	2	Pump Demand Valve Cover
15	61015.004	\$ 8	1	Inspection Screw
16	58700.022	-	1	Choke Cable Bracket
17	64700.003	-	1	Lever Fixing Screw
18	64605.017	\$ 1.7	1	Choke Cable Clamp
19	41565.008	-	1	O ring
20	57804.021	-	1	Dispositivo di sgolfamento comprendente
21	61015.003	-	1	— Tappo
22	64595.005	\$ 10.6	1	— Diaphragm adjusting screw
23	64700.004	\$ 3	3	Pump Cover Screw
24	32384 009	-	1	— Coperchio sceto la
25	47600.070	-	1	— Diaphragm loading spring
26	47407.040	\$ 34	1	— Membrana completa
27	57804.022	-	1	— Scatola con boccola
28	64700.010	-	2	Fixing Screw
29	55510.013	-	1	Rosetta per leva
30	45025.098	-	1	Lever
31	55530.008	\$ 4.2	1	Spring Ring
32	34715.006	-	1	— Cold Start Nut
33	45103.019	-	1	Lever
34	12775.010	\$ 10.1	1	Bushing For Lever
35	64700.012	\$ 3.2	1	Lever Fixing Screw
36	61280.066	-	1	Tirantlno comando sgolfamento
37	32610.006	-	1	— Spilt pin
38	34715.014	\$ 1.1	1	Throttle Spindle Nut
39	55520.002	\$ 1.1	1	Shaft Lock Tab
40	45032.058	-	1	Throttles control lever
41	47610.071	\$ 4.5	1	Throttle Return Spring
42	55555.019	\$ 1.7	1	Shaft Spacer
43	64520.024	-	4	Throttle Plate Screw
44	64005 092	-	2	Throttle Valve
45	10005.411	\$ 34.1	1	Throttle Shaft
45	10006 409	-	1	Primary Throttle Shaft - Oversized
46	64700.012	\$ 3.2	1	Lever Fixing Screw
47	12775.010	\$ 10.1	1	Bushing For Lever
48	45096.022	-	1	Leva a squadra comprendente

No	Teil Nr.	Preis	Stück	Beschreibung
49	64615.004	-	1	- Screw securing wire
50	45096.021	-	1	— Leva a squadra
51	14852.004	-	1	Pump Cam
52	58445.001	-	1	Fixing Pin
53	61280.039	-	1	Tirantino comando avviamento
54	47670.002	\$ 5.7	1	Compression Spring
55	47407.039	-	1	Pump diaphragm
56	39174.009	-	1	Flangia pompa
57	32486.025	-	1	Accelerator Pump Cover
58	64700.019	-	4	Pump Cover Screw
59	64700.004	\$ 3	2	Pump Cover Screw
60	47600.107	\$ 9.4	1	Pump Spring
61	41640.019	\$ 6.3	1	Guarnizione per flangia pompa
62	41120.001	\$ 4.3	2	Main jet
63	50002.004	-	1	Shaft Bushing
64	47600.027	\$ 4.9	1	Bush retaining spring
65	45082.007	-	1	Leva registro minimo veloce comprendente
66	45080.012	-	1	— Throttle Lever
67	34705.002	-	1	— Cold Start Nut
68	64520.028	-	1	Throttles adjusting screw
69	45082.006	-	1	Fast idling loose lever
70	55520.003	-	1	Shaft Lock Tab
71	34710.003	\$ 1.1	1	Throttle Spindle Nut
72	47605 006	-	1	Spindle return spring
73	64520.029	-	1	Fixing Screw
74	55530.008	\$ 4.2	1	Spring Ring
75	12775.010	\$ 10.1	1	Bushing For Lever
76	45032.104	-	1	Choke Lever
77	47610.003	\$ 5.7	1	Choke lever return spring
78	12775.010	\$ 10.1	1	Bushing For Lever
79	64700.012	\$ 3.2	1	Lever Fixing Screw
80	32610.006	-	1	— Spilt pin
81	61280.040	-	1	Tie rod
82	64525.003	-	4	Choke plate fixing screw
83	64005.012	-	2	Choke throttle valve
84	10020.217	-	1	Choke shaft
85	45200.033	-	1	Lever
86	64955 104	-	4	Stud
87	64520.092	-	1	Carburetor Body
88	41030.006	-	1	Float
89	41160.003	\$ 3.4	2	Idle jet
90	52570.003	\$ 17.1	2	Idle Jet Holder
91	64240.008	-	1	Float valve
92	41535.015	-	1	Needle valve gasket
93	52000.015	\$ 2.1	1	Float pivot
94	37022.002	\$ 5.5	1	Filter element
95	41530 024	-	1	Fuel Filter Gasket
96	61002 010	-	1	Tappo ispezione filtro

<https://www.carbparts.eu>

Preise und Produktverfügbarkeit können sich ändern