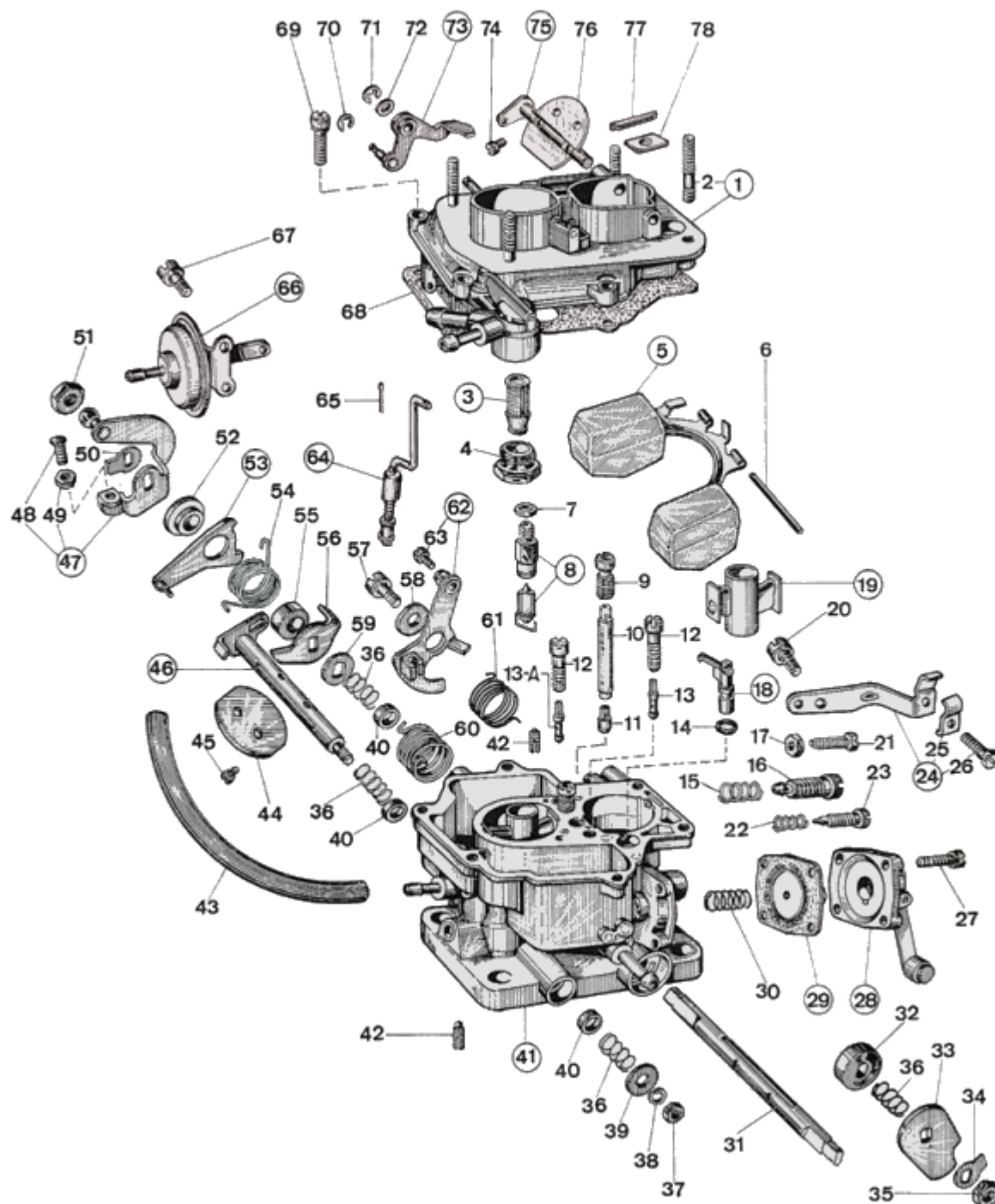




WEBER 32 DMTR 20

Exploded view



<https://www.carbparts.eu>

Los precios y la disponibilidad de los productos están sujetos a cambios



WEBER 32 DMTR 20

Lista de partes



No	Parte No	Precio	Pcs	Descripción
1	31716.173	-	1	Carburetor cover Assy, including:
2	64960.008	-	4	— Stud
3	37022.002	\$ 5.5	1	Filter element
4	61002.018	\$ 11.3	1	Fuel Filter Cover
5	41030.012	-	1	Float
6	52000.036	\$ 2.1	1	Float Fulcrum Pin
7	41535.015	-	1	Needle valve gasket
8	64240.008	-	1	Float valve
9	41370.001	\$ 6.4	1	Emulsion tube holder air corrector
9	41370.001	\$ 6.4	1	Emulsion tube holder air corrector
10	61450.229	\$ 30.1	2	Emulsion Tube
11	41115.003	\$ 6	1	Main jet
11	41115.801	-	1	Main jet
12	52570.004	\$ 10.1	2	Idle Jet Holder
13-A	41160.003	\$ 3.4	1	Idle jet
13	41160.823	-	1	Idle jet
14	41565.001	-	1	Pump Jet 'O' Ring
15	47600.097	-	1	Compression Spring
16	64750.027	\$ 23.7	1	Idling adjustment screw
17	34705.001	-	1	Nut
18	41254.008	\$ 17.7	1	Pump jet
19	31966.017	-	2	Auxiliary venturi
20	64700.012	\$ 3.3	1	Lever Fixing Screw
21	64625.012	\$ 8.2	1	Throttle Adjustment Screw
22	47600.007	\$ 2.6	1	Idle Mixture Screw Spring
23	64755.009	-	1	Idle Mixture Screw
24	58702.029	-	1	Sheat support Assy. including:
25	52145.004	-	1	- Sheat securing plate
26	64615.007	-	1	- Screw securing wire
27	64700.006	-	4	Pump Cover Screw
28	32486.047	-	1	Accelerator Pump Cover
29	47407.050	\$ 11.9	1	Pump diaphragm
30	47600.107	\$ 9.4	1	Pump Spring
31	10001.209	-	1	Primary Throttle Shaft - Oversized
31	10000.241	-	1	Primary Throttle Shaft
32	50002.008	\$ 8.9	1	Shaft Bushing
33	14850.077	\$ 51.7	1	Pump Cam
34	55520.004	\$ 1.1	1	Throttle Shaft Lock Washer
35	34710.003	\$ 1.1	1	Throttle Spindle Nut
36	47600.027	\$ 4.9	4	Bush retaining spring
37	34705.001	-	1	Nut
38	55525.001	-	1	Spring Washer

No	Parte No	Precio	Pcs	Descripción
39	55510.081	\$ 2.3	1	Washer For Shaft
40	12750.085	\$ 4.3	3	Bushing
41		-	1	Carburettor body
42	64595.013	-	2	Secondary throttle adjusting screw
43	61400.018	-	1	Pneumatic pump connecting pipe
44	64005.090	\$ 18.1	2	Throttle Valve
45	64520.027	-	4	Throttle plate screw
46	10016.207	-	1	Secondary Throttle Shaft Oversized
46	10015.255	-	1	Secondary Throttle Shaft
47	45041.071	-	1	Leva comando farfalla completa di:
48	64595.009	-	1	— Screw
49	34715.006	-	1	— Cold Start Nut
50	55520.002	\$ 1.1	1	Shaft Lock Tab
51	34715.014	\$ 1.1	1	Throttle Spindle Nut
52	12775.053	-	1	Bushing
53	45069.015	-	1	Lever
54	47610.092	\$ 5.7	1	Spindle return spring
55	12750.087	-	1	Bushing
56	45136.052	-	1	Lever
57	64700.012	\$ 3.3	1	Lever Fixing Screw
58	55510.002	\$ 1.7	1	Spring Washer
59	55555.019	\$ 1.7	1	Shaft Spacer
60	47610.091	-	1	Choke lever return spring
61	47610.058	-	1	Lever return spring
62	45202.069	\$ 26.8	1	Choke Lever
63	64615.004	-	1	- Screw securing wire
64	61287.023	-	1	Choke rod
65	32610.005	\$ 1.6	1	Spilt pin
66	57804.107	-	1	Dispositivo di sgolfamento
67	64700.012	\$ 3.3	2	Lever Fixing Screw
68	41705.039	-	1	Carburettor Cover Gasket
69	64700.005	-	6	Top Cover Fixing Screw
70	10140.501	\$ 1.8	1	Locking Ring
71	10140.502	\$ 2.4	1	Locking Ring
72	55510.034	-	1	Spring Washer
73	45069.017	-	1	Lever
74	64525.003	-	2	Choke plate fixing screw
75	10015.256	-	1	Choke shaft
76	64010.029	-	1	Choke throttle valve
77	61070.002	\$ 3.4	1	Dust seal plug
78	52135.010	\$ 3.4	1	Dust seal plate

<https://www.carbparts.eu>

Los precios y la disponibilidad de los productos están sujetos a cambios