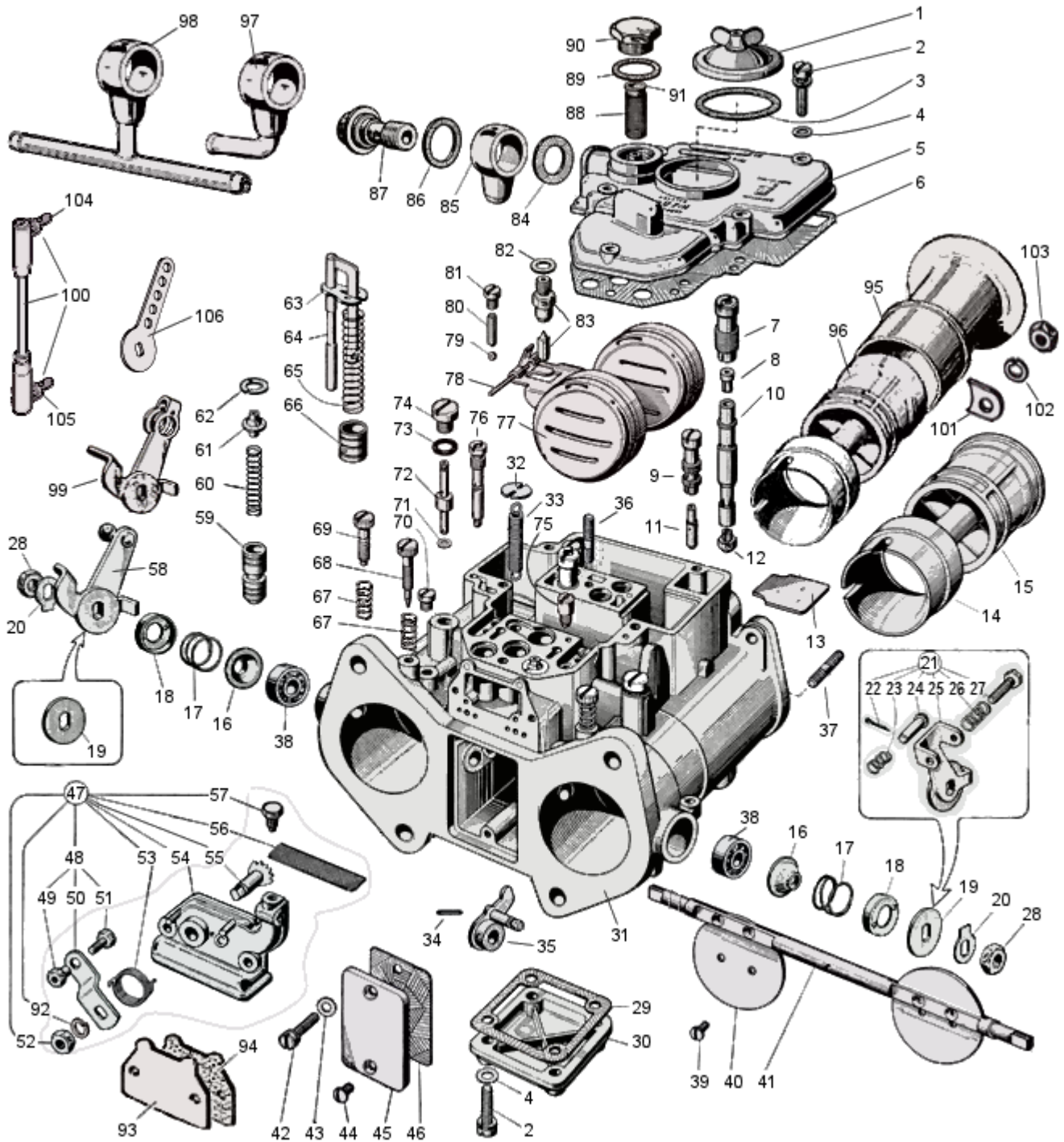




## WEBER 40 DCOE early type - exploded view



<https://www.carbparts.eu>

Prices and product availability are subject to change



**CarbDeal**  
Selling carburetor parts since 2005



## WEBER 40 DCOE early type - Parts list

No	Part No	Price	Pcs	Description	No	Part No	Price	Pcs	Description
1	32376.003	€ 7.9	1	Jet Coverá	54	32556.001	€ 0	1	Cold Start Unit Bodyá
2	64700.001	€ 0.5	5	Cover Screwá	55	10085.003	€ 0	1	Shaftá
3	41550.002	€ 2.5	1	Gasket	56	37000.016	€ 3.8	1	Filter Screen
4	55510.034	€ 0.4	5	Washer	57	64605.017	€ 1.8	1	Fixing Boltá
5	31734.197	€ 57.6	1	Carb Top Coverá	58	45041.009	€ 20	1	Lever
6	41715.011	€ 1.7	1	Carb. Cover Gasketá	59	64330.003	€ 5.8	2	Starter Valveá
7	52580.001	€ 4.6	2	Emulsion Tube Holderá	60	47600.005	€ 2.9	2	Starter Valve Springá
8	77401	€ 4.3	2	Air Corrector Jetá	61	12775.004	€ 2.9	2	Spring Retainerá
9	52585.006	€ 5.4	2	Idle Jet Holderá	62	10140.010	€ 3.1	2	Spring Washerá
10	61450	€ 24.2	2	Emulsion Tubeá	63	52140.004	€ 2.6	1	Pump Screen retainerá
11	74800	€ 2.9	2	Idle Jetá	64	10410.015	€ 7.5	1	Pump Rod
12	73401	€ 12.5	2	Main Jet	65	47600.064	€ 4.6	1	Pump Spring
13	52130.003	€ 1.7	1	Plate	66	58602.003	€ 7.3	1	Pump Plunger
14	72302	€ 36.7	2	Choke Tube 40DCOE	67	47600.007	€ 2.2	2	Idle Screw Spring
15	70001	€ 0	2	Auxiliary Venturi early - bolton air horns	68	64750.001	€ 2.5	2	Idle Mixture Screw
16	41570.001	€ 1	2	Dust Coverá	69	64625.012	€ 5.4	1	Throttle stop screw
17	47600.063	€ 1.8	2	Spring	70	61015.002	€ 5	2	Progression Hole Plug
18	58000.007	€ 2.7	2	Retaining Coverá	71	41535.021	€ 1.1	2	Pump Gasket
19	55555.010	€ 1.7	1	Washer	72	76801	€ 4.7	2	Pump Jetá
20	55520.004	€ 1	2	Lock washer	73	41565.009	€ 0.6	2	Pump Cover Seal
21	45048.149	€ 15	1	Balance lever	74	61015.008	€ 7.5	2	Pump Cover
22	32610.002	€ 0.1	1	Split pin	75	79701	€ 6.6	1	Inlet Valve With Exhaustá
23	47600.093	€ 2.2	1	Spring	76	75605	€ 10	2	Starter Jetá
24	52010.097	€ 0.6	1	Piná	77	41030.005	€ 33	1	Float
25	45041.147	€ 0	1	Balance lever	78	52000.001	€ 1.6	1	Float Fulcrum Pin
26	47600.094	€ 2.2	1	Spring	79	58300.001	€ 0.8	2	Pump Valve Ball
27	55520.004	€ 1	1	Screw	80	52730.001	€ 3.3	2	Stuffing Ball
28	34710.003	€ 1	2	Shaft Nutá	81	61015.006	€ 3.3	2	Retaining Screw
29	41640.001	€ 2.5	1	Gasket	82	83102.120	€ 0.3	1	Needle Valve Gasket
30	32374.008	€ 11.7	1	Bottom Bowl Coverá	83	79503	€ 7.9	1	Needle Valveá
31	€ 0	€ 0	1	Carburetor Bodyá	84	41530.031	€ 0.3	1	Fuel Union Gasketá
32	52210.006	€ 1.5	1	Spring Anchor Plateá	85	10534.019	€ 0	1	Fuel Union Blank
33	47605.027	€ 1.6	1	Throttle Return Springá	86	41530.024	€ 0.3	1	Outer Fuel Union Gasketá
34	58445.001	€ 0.4	1	Piná	87	12715.008	€ 7.5	1	Fuel Union Boltá
35	45082.005	€ 13.9	1	Pump Control Leverá	88	37022.010	€ 3.7	1	Fuel Filterá
36	64955.007	€ 11.6	1	Stud	89	41530.024	€ 0.3	1	Gasketá
37	64955.101	€ 12.5	1	Stud	90	61002.010	€ 6.2	1	Filter Cover
38	32650.001	€ 3.3	2	Throttle Shaft Bearingá	91	12775.026	€ 2.9	1	Plug
39	64570.006	€ 2.1	4	Throttle Plate Screwá	92	55525.010	€ 0.4	1	Washerá
40	64005.059	€ 7.9	2	Throttle Plate 40 DCOEá	93	52135.008	€ 2.5	1	Blanking plate
41	10005.401	€ 24.2	1	Throttle Shaft 40 DCOEá	94	ST2283	€ 0.8	1	Blanking plate gasket
42	64700.004	€ 2	2	Cold Start Fixing Screwá	95	52840.012	€ 16.4	2	Air horn
43	55510.038	€ 0	2	Flat Washerá	96	70003	€ 33.7	2	Auxiliary Venturi with clip - slide in air horns
44	64570.009	€ 0.7	2	Flat Fixing Screwá	97	10536.035	€ 6.7	1	Fuel Union L pipe
45	52135.024	€ 4.2	1	Inspection plate	98	10536.034	€ 11.5	1	Fuel inlet T pipe
46	41640.021	€ 0.8	1	Inspection plate Gasketá	99	45048.007	€ 11.9	1	Throttle lever
47	32556.002	€ 37.5	1	Cold Start Unit	100	ST2559	€ 18.4	1	Rod with ball ends
48	45027.003	€ 0	1	Lever Assy.	101	52150.012	€ 10	4	Air horn Tab
49	34720.002	€ 0	1	Nut	102	55525.010	€ 0.4	4	Spring Washerá
50	45025.029	€ 0	1	Lever	103	34705.004	€ 0.6	4	Air horn fixing nut
51	64800.002	€ 0	1	Wire screw	104	ST2460	€ 4.2	1	Ball end Left thread
52	34715.010	€ 0	1	Nutá	105	ST1937	€ 4.2	1	Ball end Right thread
53	47610.006	€ 6.3	1	Return Spring	106	ST1936	€ 5	1	Universal lever

<https://www.carbparts.eu>

Prices and product availability are subject to change

