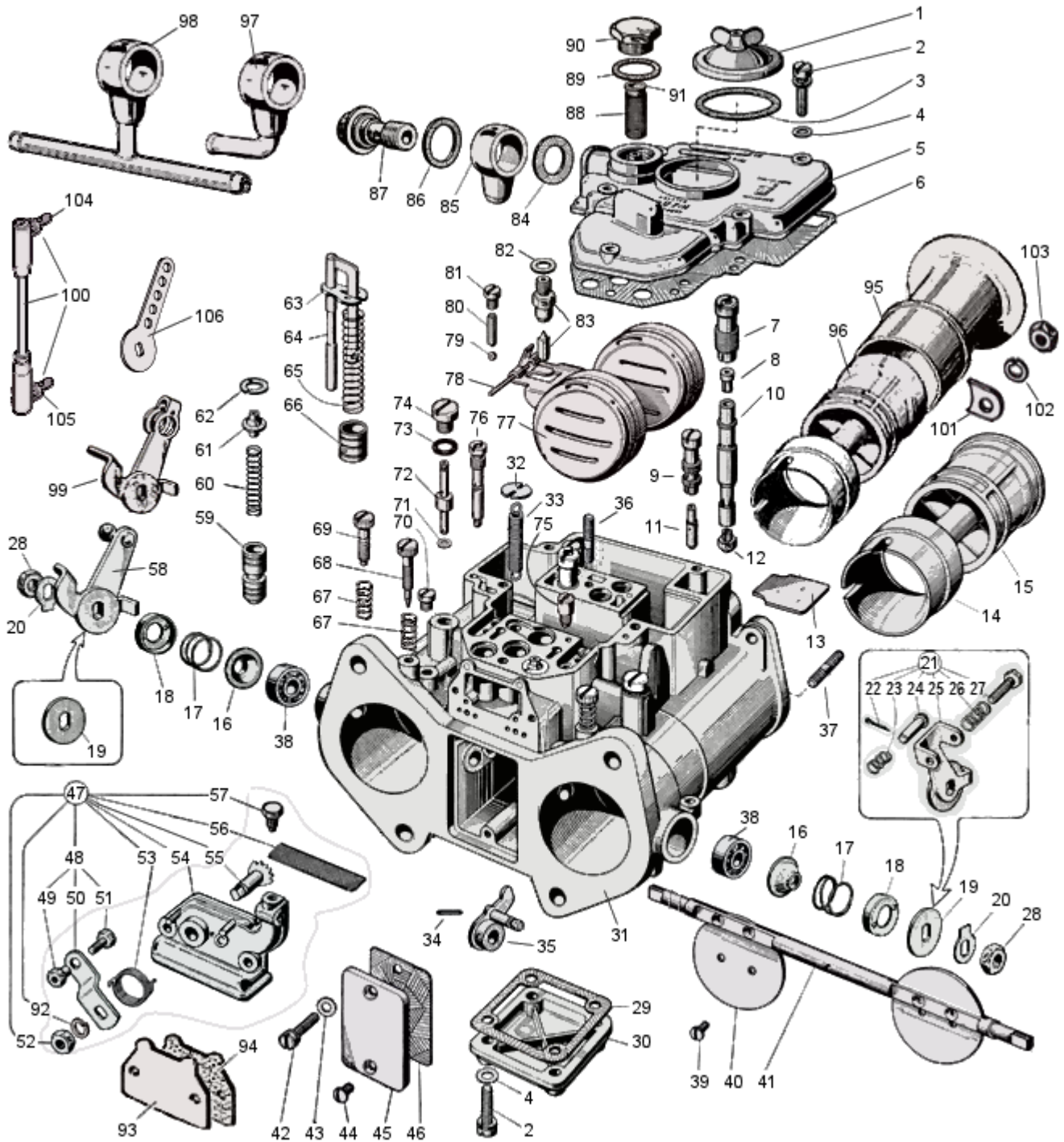




# WEBER 40 DCOE early type - exploded view



<https://www.carbparts.eu>

Prices and product availability are subject to change



**CarbDeal**  
Selling carburetor parts since 2005



## WEBER 40 DCOE early type - Parts list

No	Part No	Price	Pcs	Description	No	Part No	Price	Pcs	Description
1	32376.003	£ 6.9	1	Jet Coverá	54	32556.001	£ 0	1	Cold Start Unit Bodyá
2	64700.001	£ 0.4	5	Cover Screwá	55	10085.003	£ 0	1	Shaftá
3	41550.002	£ 2.2	1	Gasket	56	37000.016	£ 3.3	1	Filter Screen
4	55510.034	£ 0.4	5	Washer	57	64605.017	£ 1.5	1	Fixing Boltá
5	31734.197	£ 50	1	Carb Top Coverá	58	45041.009	£ 17.4	1	Lever
6	41715.011	£ 1.5	1	Carb. Cover Gasketá	59	64330.003	£ 5.1	2	Starter Valveá
7	52580.001	£ 4	2	Emulsion Tube Holderá	60	47600.005	£ 2.5	2	Starter Valve Springá
8	77401	£ 3.8	2	Air Corrector Jetá	61	12775.004	£ 2.5	2	Spring Retainerá
9	52585.006	£ 4.7	2	Idle Jet Holderá	62	10140.010	£ 2.7	2	Spring Washerá
10	61450	£ 21	2	Emulsion Tubeá	63	52140.004	£ 2.2	1	Pump Screen retainerá
11	74800	£ 2.5	2	Idle Jetá	64	10410.015	£ 6.5	1	Pump Rod
12	73401	£ 10.9	2	Main Jet	65	47600.064	£ 4	1	Pump Spring
13	52130.003	£ 1.5	1	Plate	66	58602.003	£ 6.4	1	Pump Plunger
14	72302	£ 31.9	2	Choke Tube 40DCOE	67	47600.007	£ 1.9	2	Idle Screw Spring
15	70001	£ 0	2	Auxiliary Venturi early - bolton air horns	68	64750.001	£ 2.2	2	Idle Mixture Screw
16	41570.001	£ 0.9	2	Dust Coverá	69	64625.012	£ 4.7	1	Throttle stop screw
17	47600.063	£ 1.6	2	Spring	70	61015.002	£ 4.3	2	Progression Hole Plug
18	58000.007	£ 2.3	2	Retaining Coverá	71	41535.021	£ 0.9	2	Pump Gasket
19	55555.010	£ 1.5	1	Washer	72	76801	£ 4.1	2	Pump Jetá
20	55520.004	£ 0.9	2	Lock washer	73	41565.009	£ 0.5	2	Pump Cover Seal
21	45048.149	£ 13	1	Balance lever	74	61015.008	£ 6.5	2	Pump Cover
22	32610.002	£ 0.1	1	Split pin	75	79701	£ 5.7	1	Inlet Valve With Exhaustá
23	47600.093	£ 1.9	1	Spring	76	75605	£ 8.7	2	Starter Jetá
24	52010.097	£ 0.5	1	Piná	77	41030.005	£ 28.6	1	Float
25	45041.147	£ 0	1	Balance lever	78	52000.001	£ 1.4	1	Float Fulcrum Pin
26	47600.094	£ 1.9	1	Spring	79	58300.001	£ 0.7	2	Pump Valve Ball
27	55520.004	£ 0.9	1	Screw	80	52730.001	£ 2.8	2	Stuffing Ball
28	34710.003	£ 0.9	2	Shaft Nutá	81	61015.006	£ 2.8	2	Retaining Screw
29	41640.001	£ 2.2	1	Gasket	82	83102.120	£ 0.2	1	Needle Valve Gasket
30	32374.008	£ 10.1	1	Bottom Bowl Coverá	83	79503	£ 6.9	1	Needle Valveá
31	£ 0	£ 0	1	Carburetor Bodyá	84	41530.031	£ 0.2	1	Fuel Union Gasketá
32	52210.006	£ 1.3	1	Spring Anchor Plateá	85	10534.019	£ 0	1	Fuel Union Blank
33	47605.027	£ 1.4	1	Throttle Return Springá	86	41530.024	£ 0.2	1	Outer Fuel Union Gasketá
34	58445.001	£ 0.4	1	Piná	87	12715.008	£ 6.5	1	Fuel Union Boltá
35	45082.005	£ 12	1	Pump Control Leverá	88	37022.010	£ 3.2	1	Fuel Filterá
36	64955.007	£ 10.1	1	Stud	89	41530.024	£ 0.2	1	Gasketá
37	64955.101	£ 10.9	1	Stud	90	61002.010	£ 5.4	1	Filter Cover
38	32650.001	£ 2.8	2	Throttle Shaft Bearingá	91	12775.026	£ 2.5	1	Plug
39	64570.006	£ 1.8	4	Throttle Plate Screwá	92	55525.010	£ 0.4	1	Washerá
40	64005.059	£ 6.9	2	Throttle Plate 40 DCOEá	93	52135.008	£ 2.2	1	Blanking plate
41	10005.401	£ 21	1	Throttle Shaft 40 DCOEá	94	ST2283	£ 0.7	1	Blanking plate gasket
42	64700.004	£ 1.7	2	Cold Start Fixing Screwá	95	52840.012	£ 14.3	2	Air horn
43	55510.038	£ 0	2	Flat Washerá	96	70003	£ 29.3	2	Auxiliary Venturi with clip - slide in air horns
44	64570.009	£ 0.6	2	Flat Fixing Screwá	97	10536.035	£ 5.8	1	Fuel Union L pipe
45	52135.024	£ 3.6	1	Inspection plate	98	10536.034	£ 10	1	Fuel inlet T pipe
46	41640.021	£ 0.7	1	Inspection plate Gasketá	99	45048.007	£ 10.4	1	Throttle lever
47	32556.002	£ 32.6	1	Cold Start Unit	100	ST2559	£ 15.9	1	Rod with ball ends
48	45027.003	£ 0	1	Lever Assy.	101	52150.012	£ 8.7	4	Air horn Tab
49	34720.002	£ 0	1	Nut	102	55525.010	£ 0.4	4	Spring Washerá
50	45025.029	£ 0	1	Lever	103	34705.004	£ 0.5	4	Air horn fixing nut
51	64800.002	£ 0	1	Wire screw	104	ST2460	£ 3.6	1	Ball end Left thread
52	34715.010	£ 0	1	Nutá	105	ST1937	£ 3.6	1	Ball end Right thread
53	47610.006	£ 5.4	1	Return Spring	106	ST1936	£ 4.3	1	Universal lever

<https://www.carbparts.eu>

Prices and product availability are subject to change

