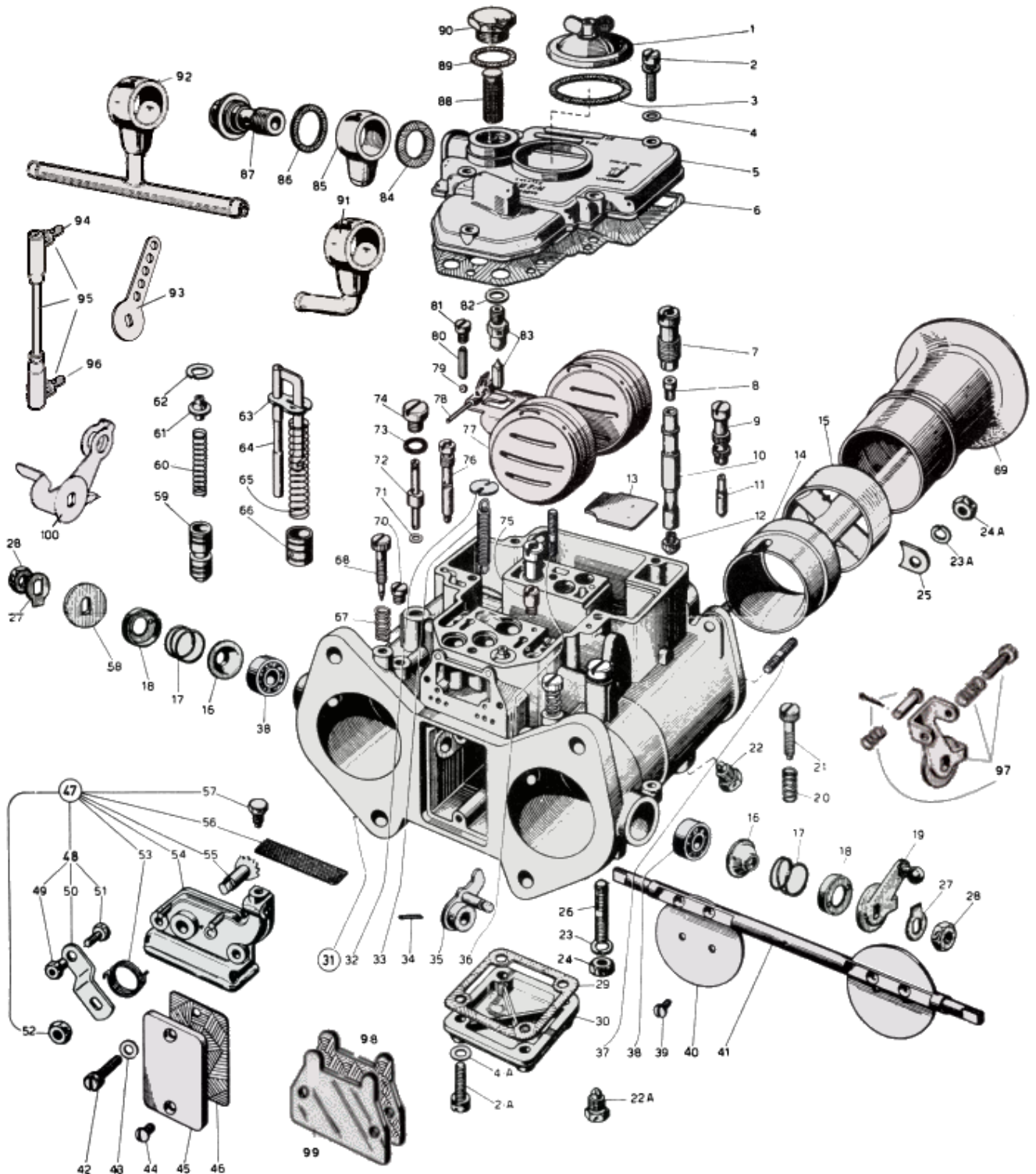




WEBER 45 DCOE early - exploded view



<https://www.carbparts.eu>

Prices and product availability are subject to change



CarbDeal
Selling carburetor parts since 2005



WEBER 45 DCOE early - Parts list

No	Part No	Price	Pcs	Description	No	Part No	Price	Pcs	Description
1	32376.003	€ 7.9	1	Jets inspection cover	49	34720.002	€ 0	1	— Nut for screw
2	64700.001	€ 0.5	5	Screw securing carburetor cover	50	45025.029	€ 0	1	— Starter lever
2 A	64700.001	€ 0.5	4	Securing screw for well-bottom cover	51	64800.002	€ 0	1	— Cable securing screw
3	41550.002	€ 2.5	1	Gasket for jets inspection cover	52	34715.010	€ 0	1	— Lever securing nut
4 A	55510.034	€ 0.4	4	Normal washer	53	47610.006	€ 6.3	1	— Lever return spring
4	55510.034	€ 0.4	5	Normal washer	54	32556.001	€ 0	1	— Cover for sheath support
5	31734.025	€ 0	1	Carburetor cover	55	10085.003	€ 0	1	— Starter shaft
6	41715.001	€ 4.2	1	Gasket for carburetor cover	56	37000.016	€ 3.8	1	— Strainer
7	52580.001	€ 4.6	2	Emulsifying tube holder	57	64605.017	€ 1.8	1	— Sheath securing screw
8	77401	€ 4.3	2	Air corrector jet	58	55555.010	€ 1.7	1	Shim washer
9	52585.006	€ 5.4	2	Idling jet-holder	59	64330.003	€ 5.8	2	Starter valve
10	61450	€ 24.2	2	Emulsifying tube	60	47600.005	€ 2.9	2	Spring for starter valve
11	74819	€ 0	2	Idling jet	61	12775.004	€ 2.9	2	Spring retainer and guide
12	73401	€ 12.5	2	Main jet	62	10140.010	€ 3.1	2	Spring washer
13	52130.003	€ 1.7	1	Plate for carburetor bowl	63	52140.004	€ 2.6	1	Spring retaining plate
14	72116	€ 9.2	2	Choke	64	10410.015	€ 7.5	1	Pump control rod
15	69602	€ 0	2	Auxiliary venturi	65	47600.064	€ 4.6	1	Spring for plunger
16	41570.001	€ 1	2	Dust cover	66	58602.003	€ 7.3	1	Pump plunger
17	47600.063	€ 1.8	2	Spring	67	47600.007	€ 2.2	2	Spring for idling adjustment screw
18	58000.007	€ 2.7	2	Spring retaining cover	68	64750.001	€ 2.5	2	Idling adjustment screw
19	45034.044	€ 0	1	Throttle control lever	69	52840.001	€ 16.4	2	Air intake horn
20	47600.007	€ 2.2	1	Throttle adjusting spring	70	61015.002	€ 5	2	Screw for progression holes inspection
21	64590.002	€ 9.1	1	Throttle adjusting screw	71	41535.021	€ 1.1	2	Gasket for pump jet
22 A	64840.003	€ 3.3	2	Choke fixing screw	72	76801	€ 4.7	2	Pump jet
22	64340.003	€ 0	2	Auxiliary venturi fixing screw	73	41565.009	€ 0.6	2	Seal
23	55525.002	€ 0	1	Spring washer	74	61015.008	€ 7.5	2	Screw plug
23 A	55525.002	€ 0	4	Spring washer	75	79701	€ 6.6	1	Intake and discharge valve
24 A	34705.004	€ 0.6	4	Nut for air intake	76	75606	€ 10	2	Starter jet
24	34705.004	€ 0.6	1	Carburetor anchoring nut	77	41030.004	€ 33	1	Float
25	52150.004	€ 10	4	Retaining plate for air intake	78	52000.001	€ 1.6	1	Fulcrum pin
26	64955.104	€ 0	1	Stud bolt	79	58300.001	€ 0.8	2	Ball for valve
27	55520.004	€ 1	2	Lock washer	80	52730.001	€ 3.3	2	Stuffing ball
28	34710.003	€ 1	2	Hexagonal nut	81	61015.006	€ 3.3	2	Retaining screw for stuffing ball
29	41640.001	€ 2.5	1	Gasket for cap	82	41535.015	€ 0	1	Gasket for needle valve
30	32374.008	€ 11.7	1	Cap for bottom of bowl	83	79401	€ 0	1	Needle valve
31	-	€ 0	1	Carburetor body	84	41530.031	€ 0.3	1	Gasket for union
32	52210.006	€ 1.5	1	Spring anchoring plate	85	10354.001	€ 0	1	Spherical union
33	47605.012	€ 1.6	1	Spindle return spring	86	41530.024	€ 0.3	1	Gasket for union
34	58445.001	€ 0.4	1	Lever fixing pin	87	12715.008	€ 7.5	1	Screw plug for union
35	45082.005	€ 13.9	1	Pump control lever	88	37022.002	€ 3.7	1	Strainer
36	64955.007	€ 11.6	1	Stud bolt	89	41530.024	€ 0.3	1	Gasket for filter plug
37	64955.101	€ 12.5	4	Stud bolt	90	61002.010	€ 6.2	1	Filter inspection plug
38	32650.001	€ 3.3	2	Ball bearing	91	10536.035	€ 6.7	1	Fuel Union L pipe
39	64570.006	€ 2.1	4	Throttle securing screw	92	10536.034	€ 11.5	1	Fuel inlet T pipe
40	64005.069	€ 34.1	2	Throttle valve	93	ST1936	€ 5	1	Universal lever
41	10005.401	€ 24.2	1	Throttle spindle	94	ST2460	€ 4.2	1	Ball end Left thread
42	64700.004	€ 2	2	Starter control securing screw	95	ST2559	€ 18.4	1	Rod with ball ends
43	55510.038	€ 0	2	Normal washer	96	ST1937	€ 4.2	1	Ball end Right thread
44	64570.009	€ 0.7	2	Cap securing screw	97	45048.149	€ 15	1	Balance lever
45	52135.002	€ 4.2	1	Cap for pump opening	98	ST2283	€ 0.8	1	Blanking plate gasket
46	41640.021	€ 0.8	1	Gasket for cap	99	52135.008	€ 2.5	1	Blanking plate
47	32556.002	€ 37.5	1	Starter control, including:	100	45048.007	€ 11.9	1	Throttle lever
48	45027.030	€ 0	1	— Starter control lever, complete with:					

<https://www.carbparts.eu>

Prices and product availability are subject to change

