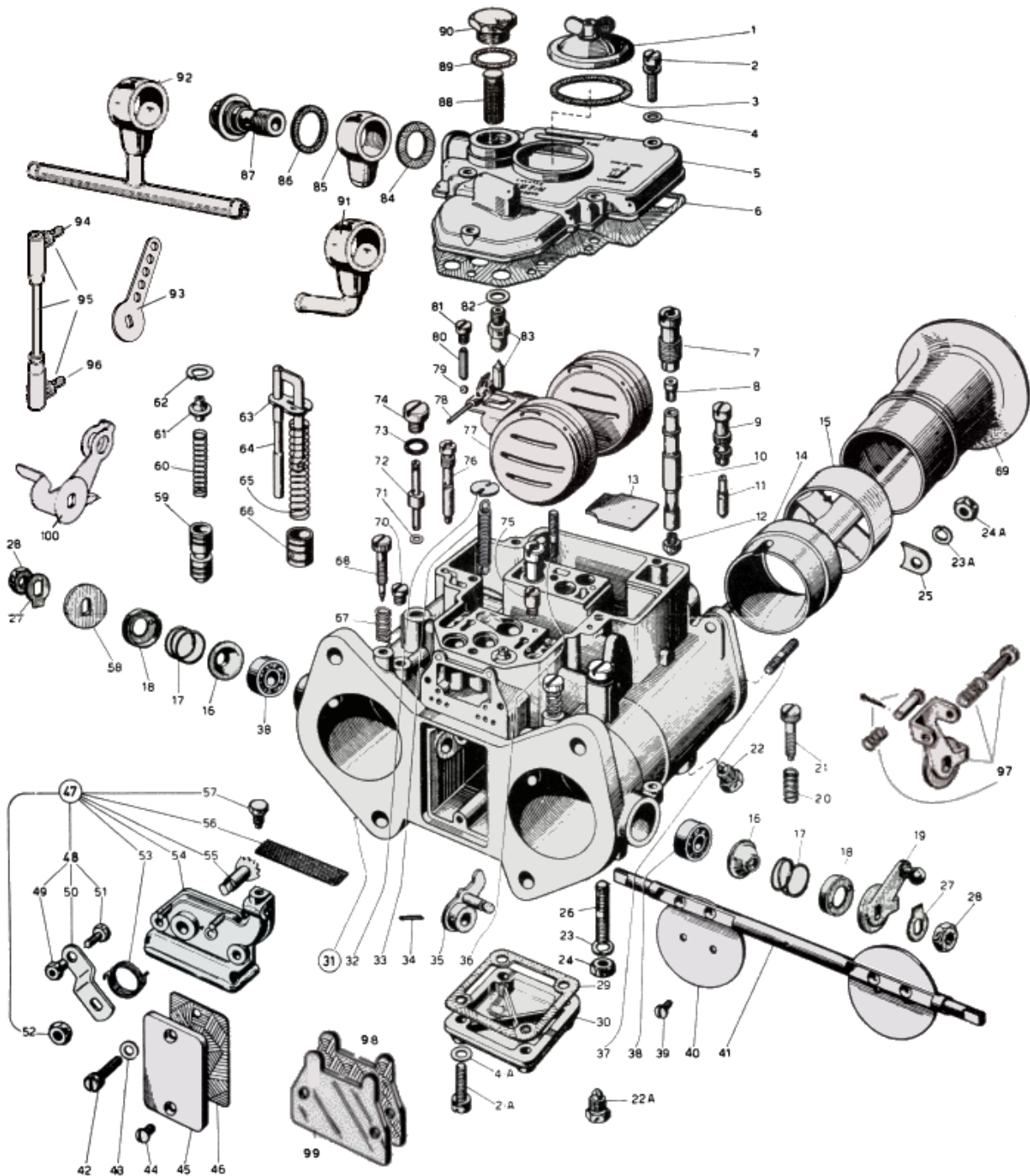




WEBER 45 DCOE early

Exploded view



<https://www.carbparts.eu>

Prices and product availability are subject to change



WEBER 45 DCOE early

List of parts



No	Part No	Price	Pcs	Description
1	32376.003	\$ 12	1	Jets inspection cover
2 A	64700.001	\$ 0.6	4	Securing screw for well-bottom cover
2	64700.001	\$ 0.6	5	Screw securing carburetor cover
3	41550.002	\$ 1.1	1	Gasket for jets inspection cover
4 A	55510.034	\$ 0.4	4	Normal washer
4	55510.034	\$ 0.4	5	Normal washer
5	31734.025	\$ 82.1	1	Carburetor cover
6	41715.001	\$ 6.6	1	Gasket for carburetor cover
7	52580.001	\$ 7.3	2	Emulsifying tube holder
8	77401	\$ 5	2	Air corrector jet
9	52585.006	\$ 8.6	2	Idling jet-holder
10	61450	\$ 28.9	2	Emulsifying tube
11	74819	\$ 0	2	Idling jet
12	73401	\$ 4.2	2	Main jet
13	52130.003	\$ 2.6	1	Plate for carburetor bowl
14	72116	\$ 14.5	2	Choke
15	69602	\$ 32.1	2	Auxiliary venturi
16	41570.001	\$ 1.1	2	Dust cover
17	47600.063	\$ 2.1	2	Spring
18	58000.007	\$ 3	2	Spring retaining cover
19	45034.044	\$ 0	1	Throttle control lever
20	47600.007	\$ 2.5	1	Throttle adjusting spring
21	64590.002	\$ 10	1	Throttle adjusting screw
22	64340.003	\$ 0	2	Auxiliary venturi fixing screw
22 A	64840.003	\$ 5.3	2	Choke fixing screw
23	55525.002	\$ 0	1	Spring washer
23 A	55525.002	\$ 0	4	Spring washer
24 A	34705.004	\$ 0.7	4	Nut for air intake
24	34705.004	\$ 0.7	1	Carburetor anchoring nut
25	52150.004	\$ 1.3	4	Retaining plate for air intake
26	64955.104	\$ 0	1	Stud bolt
27	55520.004	\$ 1.1	2	Lock washer
28	34710.003	\$ 1.1	2	Hexagonal nut
29	41640.001	\$ 4	1	Gasket for cap
30	32374.008	\$ 18.7	1	Cap for bottom of bowl
31	-	\$ 0	1	Carburetor body
32	52210.006	\$ 1.7	1	Spring anchoring plate
33	47605.012	\$ 2.5	1	Spindle return spring
34	58445.001	\$ 0.4	1	Lever fixing pin
35	45082.005	\$ 15.7	1	Pump control lever
36	64955.007	\$ 12.8	1	Stud bolt
37	64955.101	\$ 19.8	4	Stud bolt
38	32650.001	\$ 5.2	2	Ball bearing
39	64570.006	\$ 3.3	4	Throttle securing screw
40	64005.069	\$ 37.6	2	Throttle valve
41	10005.401	\$ 38.3	1	Throttle spindle
42	64700.004	\$ 3.2	2	Starter control securing screw
43	55510.038	\$ 0	2	Normal washer
44	64570.009	\$ 0.8	2	Cap securing screw
45	52135.002	\$ 8.3	1	Cap for pump opening
46	41640.021	\$ 1.3	1	Gasket for cap
47	32556.002	\$ 34.5	1	Starter control, including:
48	45027.030	\$ 0	1	— Starter control lever, complete with:

No	Part No	Price	Pcs	Description
49	34720.002	\$ 9.2	1	— Nut for screw
50	45025.029	\$ 0	1	— Starter lever
51	64800.002	\$ 0	1	— Cable securing screw
52	34715.010	\$ 0	1	— Lever securing nut
53	47610.006	\$ 9.9	1	— Lever return spring
54	32556.001	\$ 0	1	— Cover for sheath support
55	10085.003	\$ 0	1	— Starter shaft
56	37000.016	\$ 5.9	1	— Strainer
57	64605.017	\$ 2	1	— Sheath securing screw
58	55555.010	\$ 2.6	1	Shim washer
59	64330.003	\$ 9.2	2	Starter valve
60	47600.005	\$ 2.1	2	Spring for starter valve
61	12775.004	\$ 4.6	2	Spring retainer and guide
62	10140.010	\$ 3.4	2	Spring washer
63	52140.004	\$ 3.8	1	Spring retaining plate
64	10410.015	\$ 9.2	1	Pump control rod
65	47600.064	\$ 7.3	1	Spring for plunger
66	58602.003	\$ 9.9	1	Pump plunger
67	47600.007	\$ 2.5	2	Spring for idling adjustment screw
68	64750.001	\$ 4	2	Idling adjustment screw
69	52840.001	\$ 26	2	Air intake horn
70	61015.002	\$ 7.9	2	Screw for progression holes inspection
71	41535.021	\$ 1.3	2	Gasket for pump jet
72	76801	\$ 7.4	2	Pump jet
73	41565.009	\$ 0.7	2	Seal
74	61015.008	\$ 11.9	2	Screw plug
75	79701	\$ 10.4	1	Intake and discharge valve
76	75606	\$ 15.8	2	Starter jet
77	41030.004	\$ 33	1	Float
78	52000.001	\$ 2.5	1	Fulcrum pin
79	58300.001	\$ 1.3	2	Ball for valve
80	52730.001	\$ 5.2	2	Stuffing ball
81	61015.006	\$ 5.2	2	Retaining screw for stuffing ball
82	41535.015	\$ 0.3	1	Gasket for needle valve
83	79401	\$ 8.3	1	Needle valve
84	41530.031	\$ 0.3	1	Gasket for union
85	10354.001	\$ 0	1	Spherical union
86	41530.024	\$ 0.3	1	Gasket for union
87	12715.008	\$ 9	1	Screw plug for union
88	37022.002	\$ 5.8	1	Strainer
89	41530.024	\$ 0.3	1	Gasket for filter plug
90	61002.010	\$ 7	1	Filter inspection plug
91	10536.035	\$ 10.6	1	Fuel Union L pipe
92	10536.034	\$ 18.2	1	Fuel inlet T pipe
93	ST1936	\$ 7.9	1	Universal lever
94	ST2460	\$ 6.6	1	Ball end Left thread
95	ST2559	\$ 29	1	Rod with ball ends
96	ST1937	\$ 6.6	1	Ball end Right thread
97	45048.149	\$ 23.8	1	Balance lever
98	ST2283	\$ 1.3	1	Blanking plate gasket
99	52135.008	\$ 5	1	Blanking plate
100	45048.007	\$ 13.5	1	Throttle lever

<https://www.carbparts.eu>

Prices and product availability are subject to change